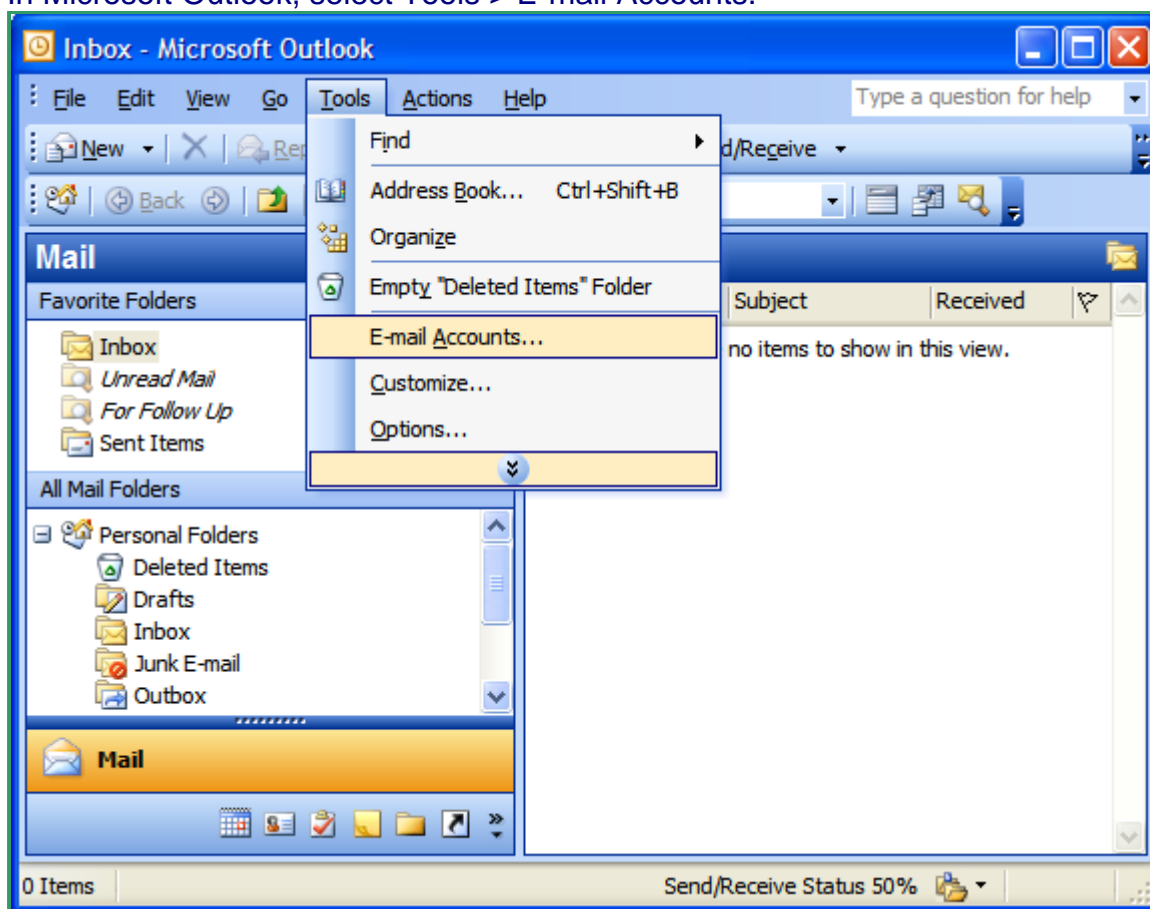


Setting Up Your E-mail in Microsoft Outlook

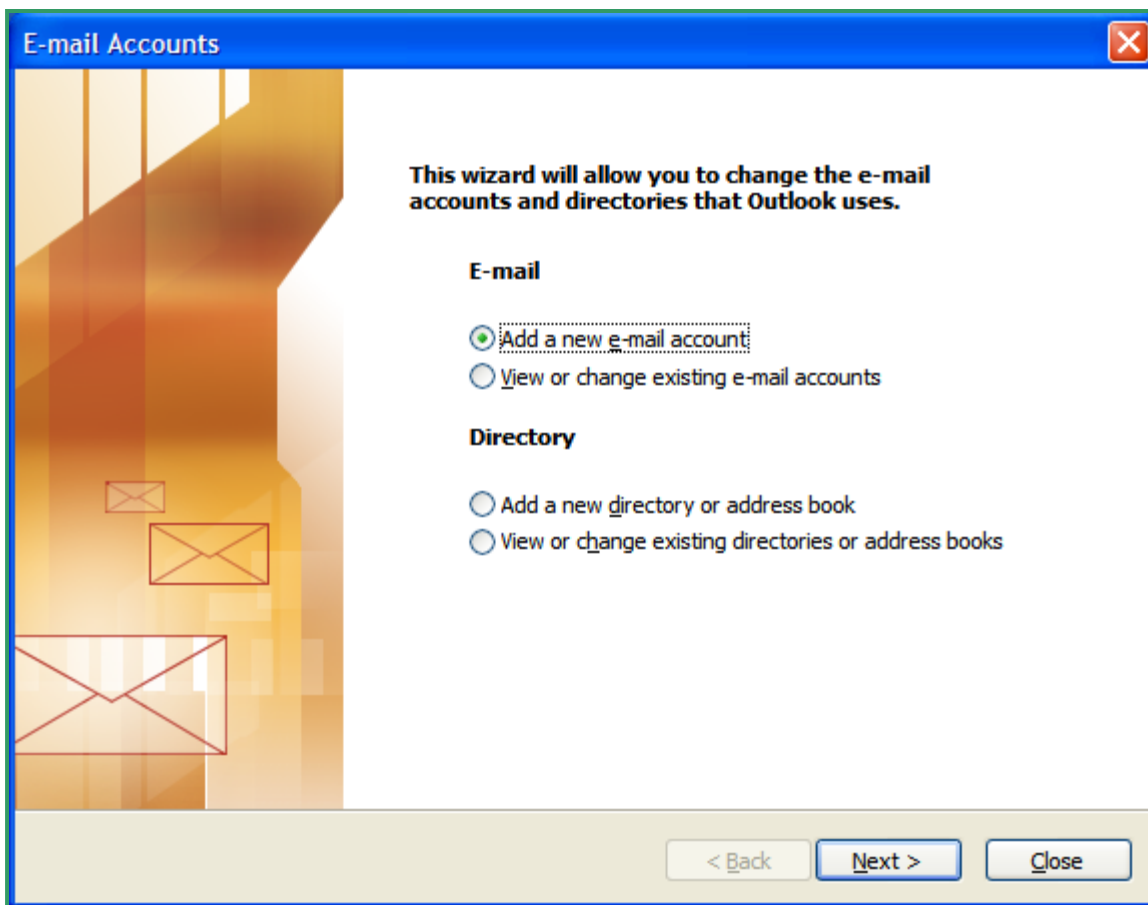
This tutorial shows you how to set up Microsoft Outlook to work with your e-mail account. This tutorial focuses on setting up Microsoft Outlook 2003, but these settings are similar in other versions of Microsoft Outlook. You can set up previous versions of Microsoft Outlook by using the settings in this tutorial.

To Set Up Your E-mail Account in Microsoft Outlook

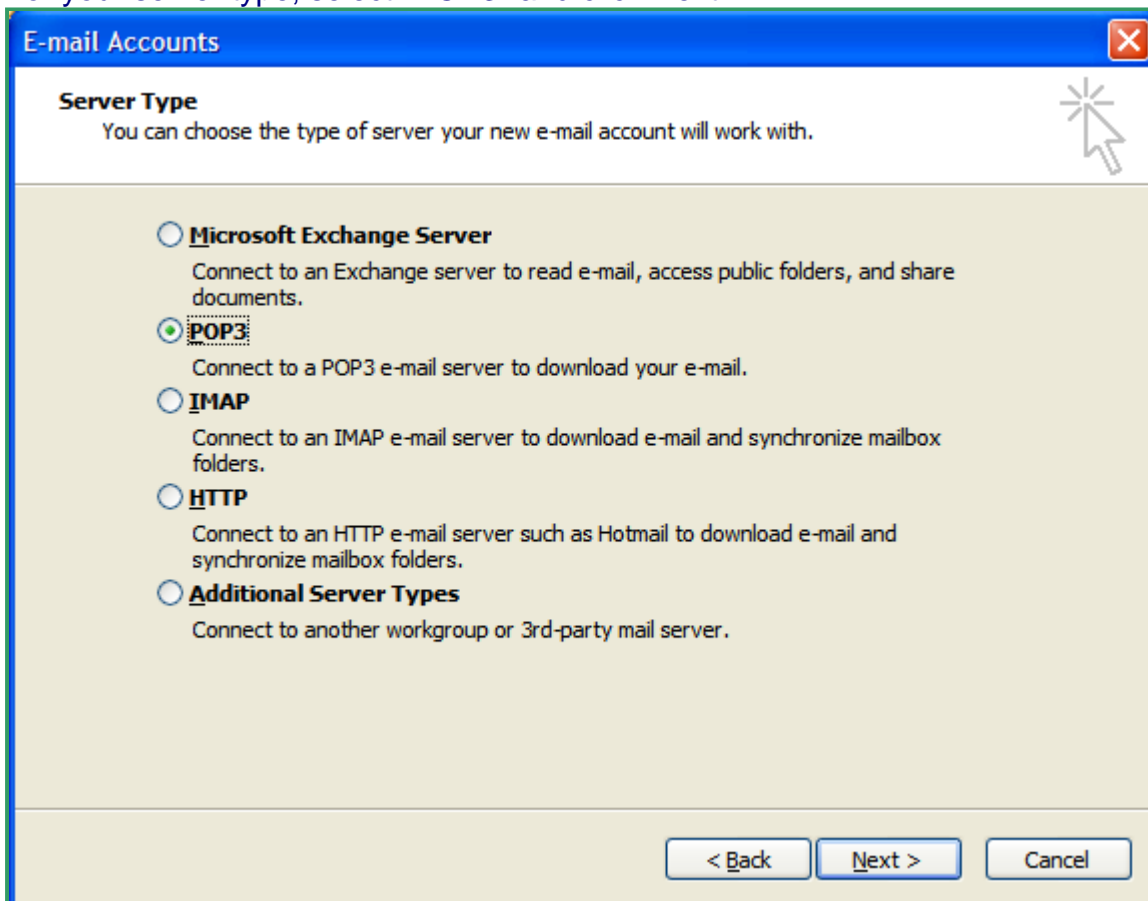
- In Microsoft Outlook, select Tools > E-mail Accounts.



- On the E-mail Accounts wizard window, select "Add a new e-mail account" and click Next.



- For your server type, select "POP3" and click Next.



- On the Internet E-mail Settings (POP3) window, enter your information as follows:
- Your Name
- Enter your first and last name.
- E-mail Address

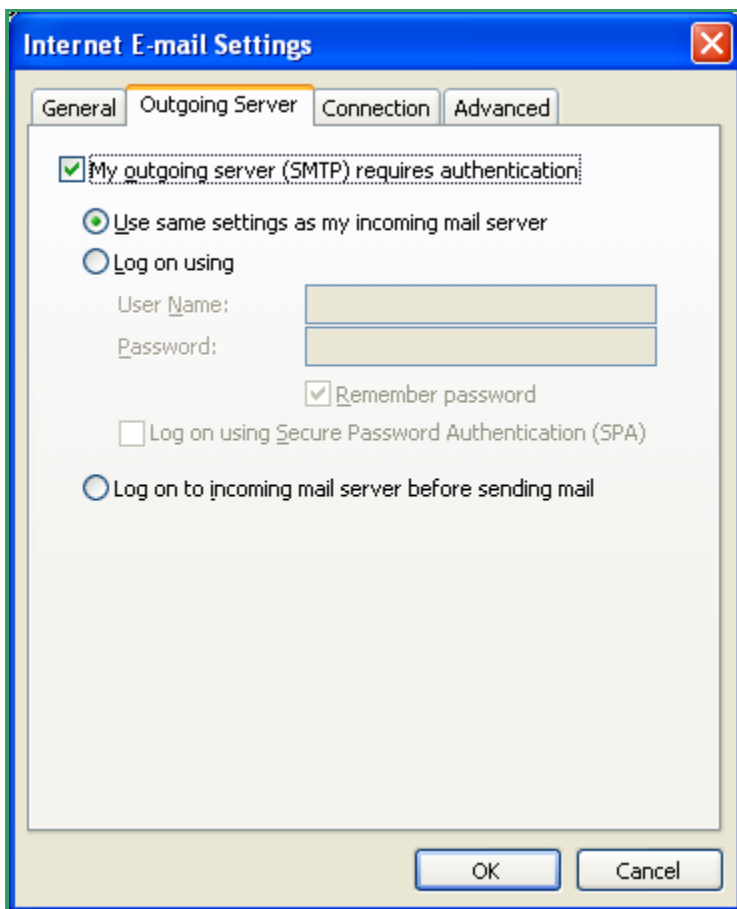
- Enter your e-mail address.
- User Name
- Enter your e-mail address, again.
- Password
- Enter the password you set up for your e-mail account.
- Incoming mail server (POP3)
- Your incoming server is *mail.andwireless.net*
- Outgoing mail server (SMTP)
- Enter *smtpout.secureserver.net* for your outgoing mail server.
- Click "More Settings."

E-mail Accounts

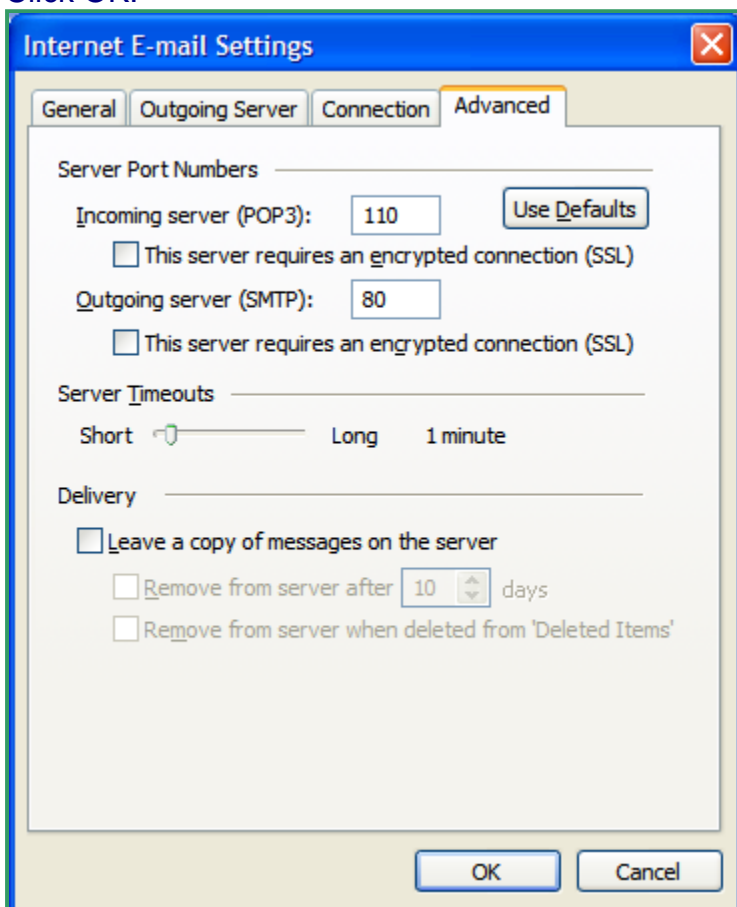
Internet E-mail Settings (POP3)
Each of these settings are required to get your e-mail account working.

User Information	Server Information
Your Name: <input type="text" value="Jane Smith"/>	Incoming mail server (POP3): <input type="text" value="mail.coolexample.com"/>
E-mail Address: <input type="text" value="jsmith@coolexample.com"/>	Outgoing mail server (SMTP): <input type="text" value="smtpout.secureserver.net"/>
Logon Information	Test Settings
User Name: <input type="text" value="jsmith@coolexample.com"/>	After filling out the information on this screen, we recommend you test your account by clicking the button below. (Requires network connection)
Password: <input type="password" value="*****"/>	
<input checked="" type="checkbox"/> Remember password	<input type="button" value="Test Account Settings ..."/>
<input type="checkbox"/> Log on using Secure Password Authentication (SPA)	<input type="button" value="More Settings ..."/>

- On the Internet E-mail Settings window, select the "Outgoing Server" tab.
- Select "My outgoing server (SMTP) requires authentication."



- Select the "Advanced" tab and change the "Outgoing server (SMTP)" port to 80 or 3535.
- Click OK.



- Click Next.

E-mail Accounts ✕

Internet E-mail Settings (POP3)
Each of these settings are required to get your e-mail account working.

User Information

Your Name:

E-mail Address:

Server Information

Incoming mail server (POP3):

Outgoing mail server (SMTP):

Logon Information

User Name:

Password:

Remember password

Log on using Secure Password Authentication (SPA)

Test Settings

After filling out the information on this screen, we recommend you test your account by clicking the button below. (Requires network connection)

Click Finish.

E-mail Accounts ✕

Congratulations!

You have successfully entered all the information required to setup your account.

To close the wizard, click Finish.