

# Evolution

Home

Outlook

Outlook Express

ThunderBird

Apple Mail

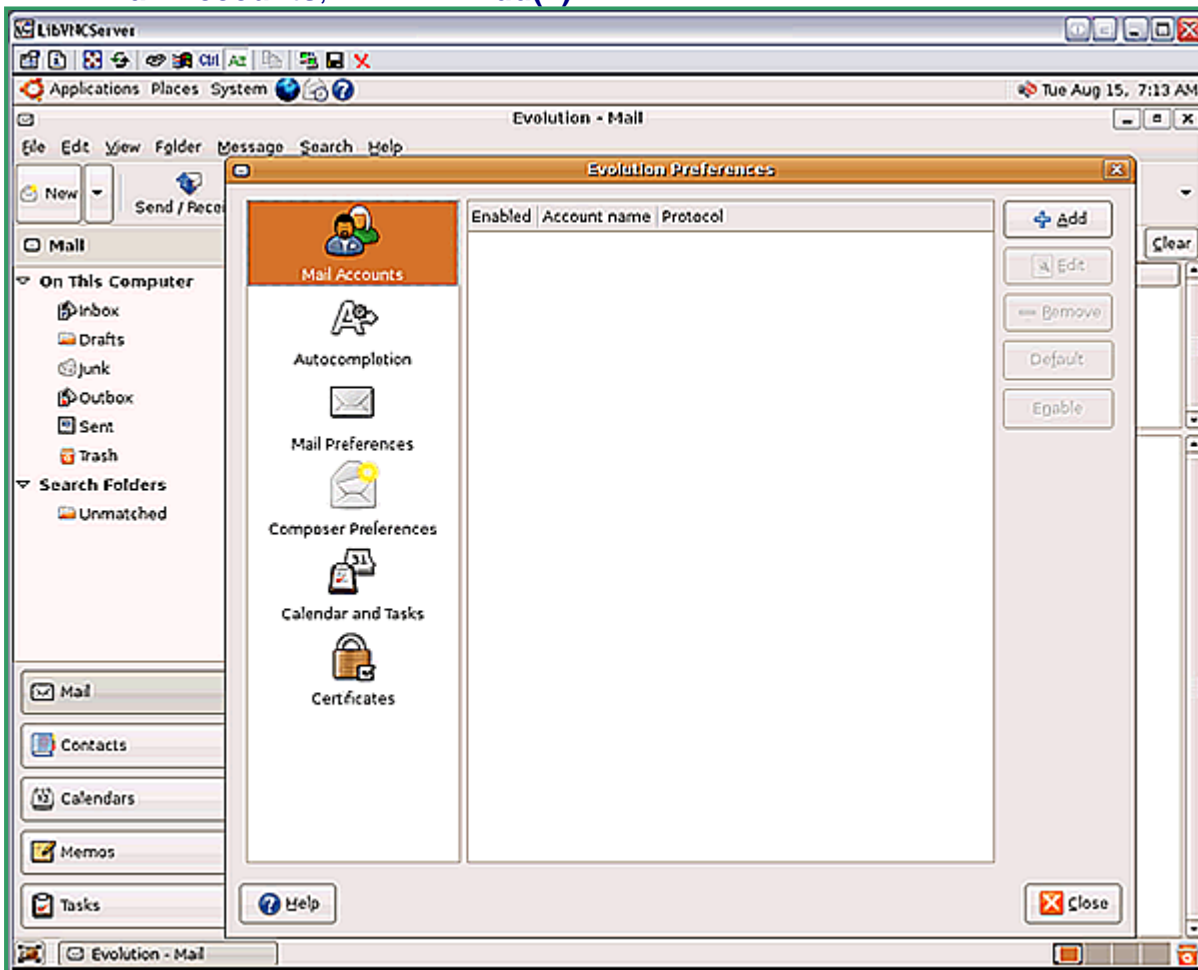
Evolution

## Setting Up Evolution

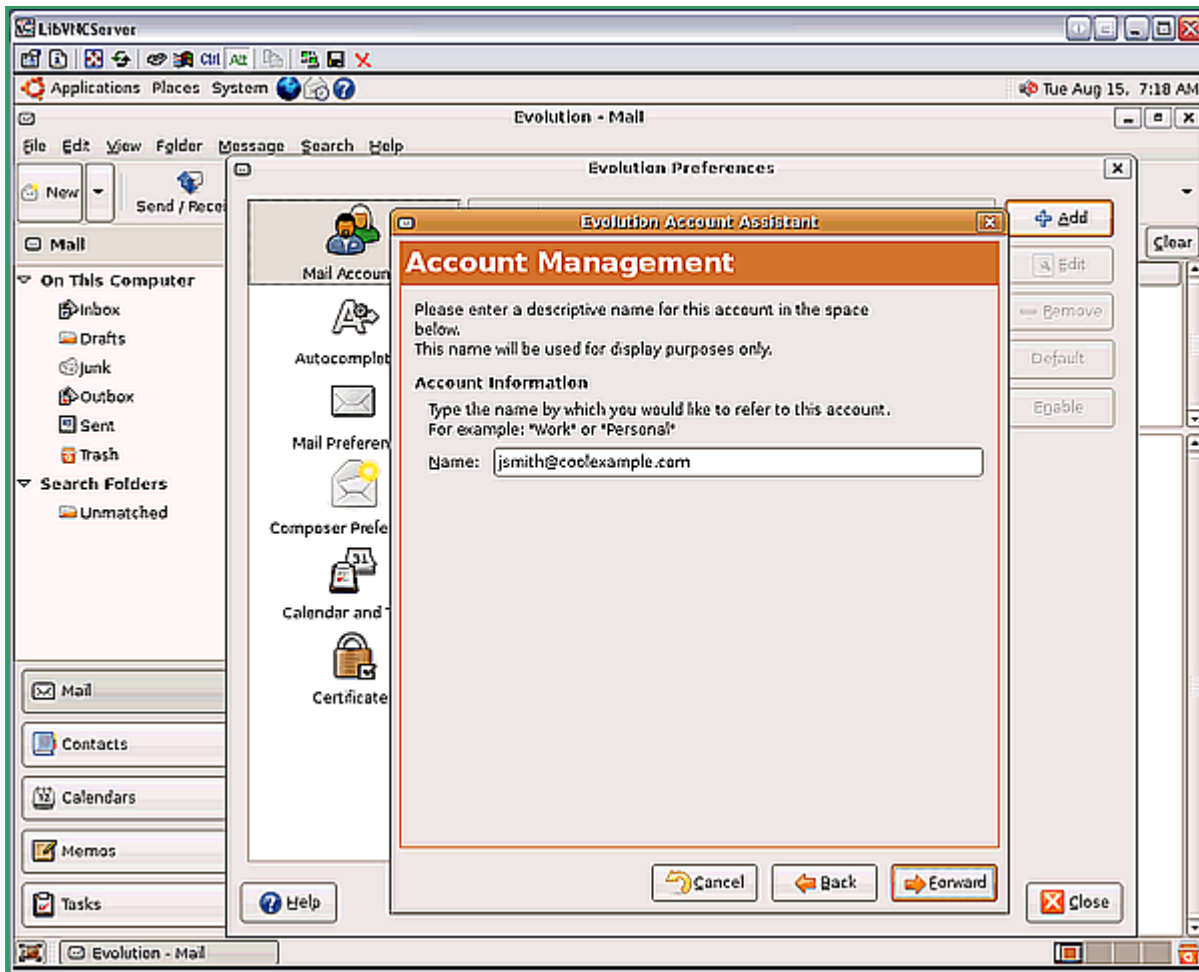
Use this tutorial to understand how to set up Evolution to work with your email account.

### To Set Up Evolution

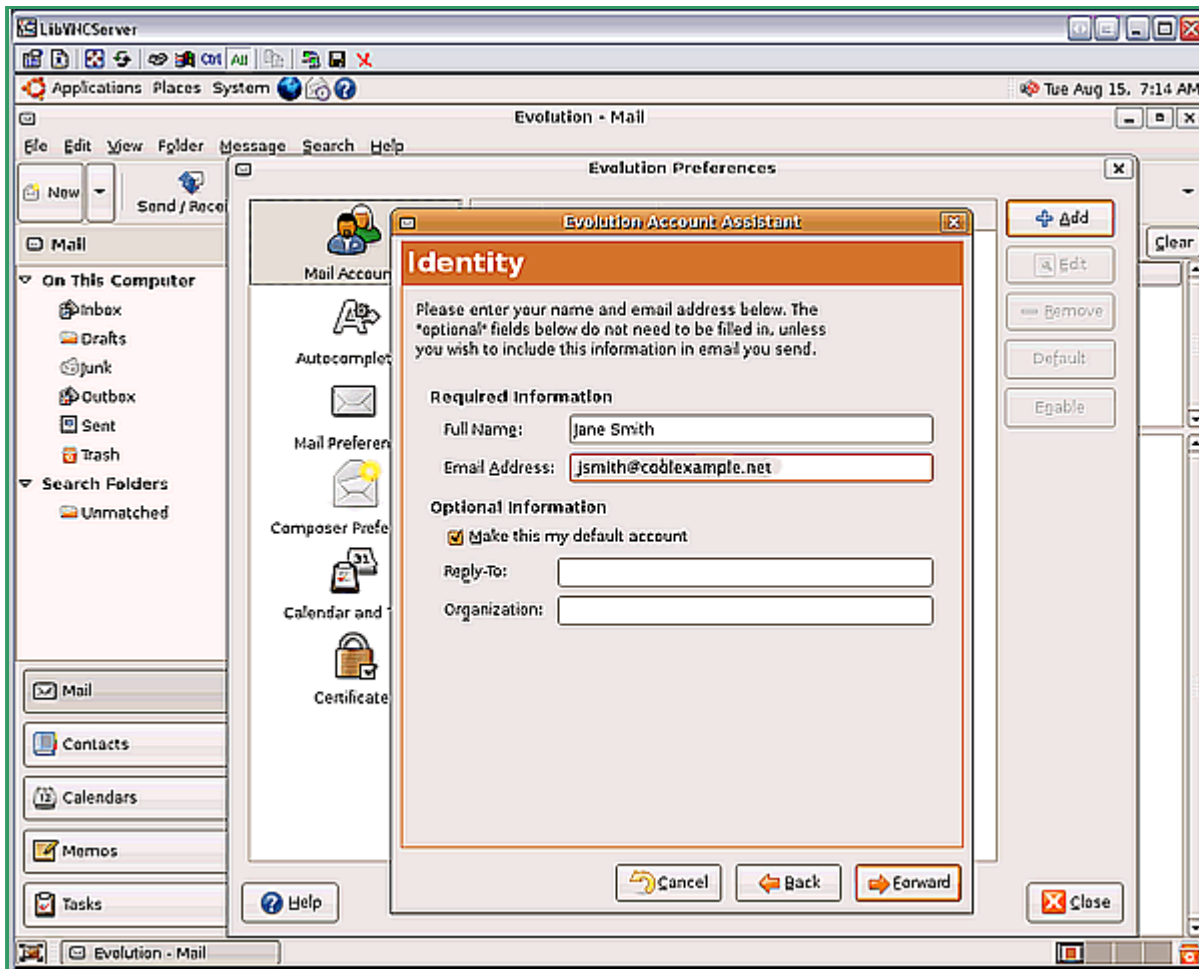
- From the Edit menu, select **Preferences**.
- Select **Mail Accounts**, and click **Add(+)**.



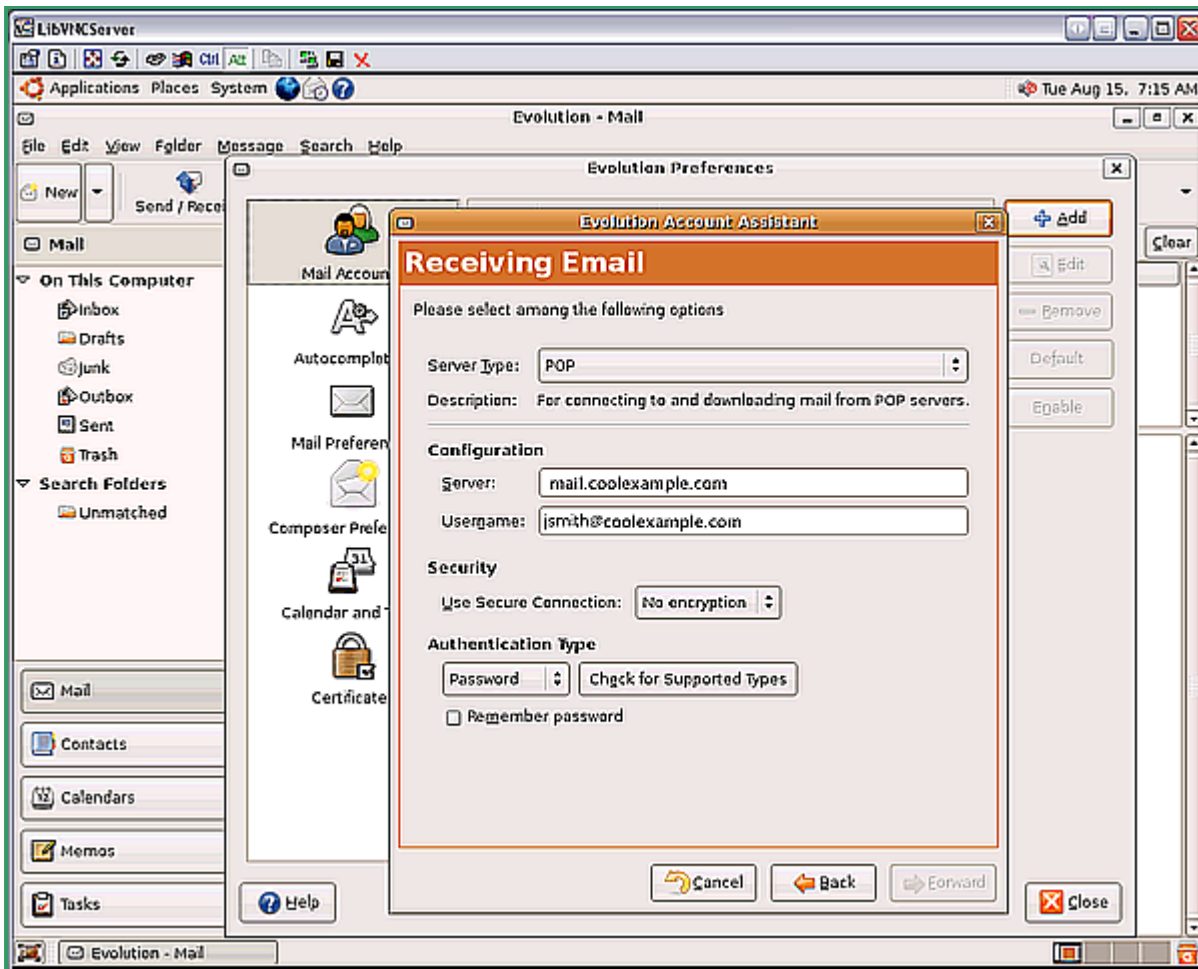
- In the Account Management screen, enter a name to identify this account and click **Forward**.



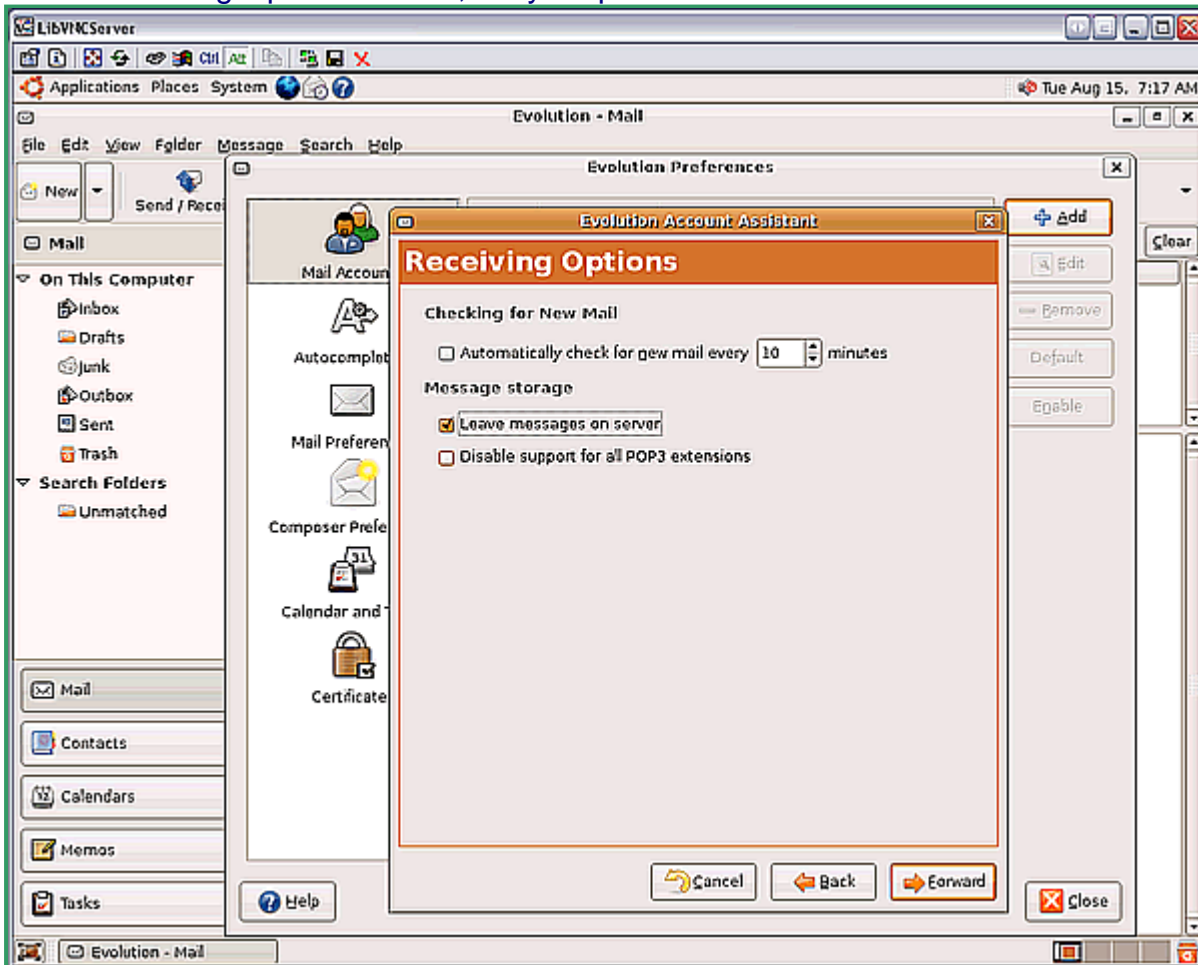
- In the Identity screen, enter your full name, email address and any optional information you want to include and then click **Forward**.



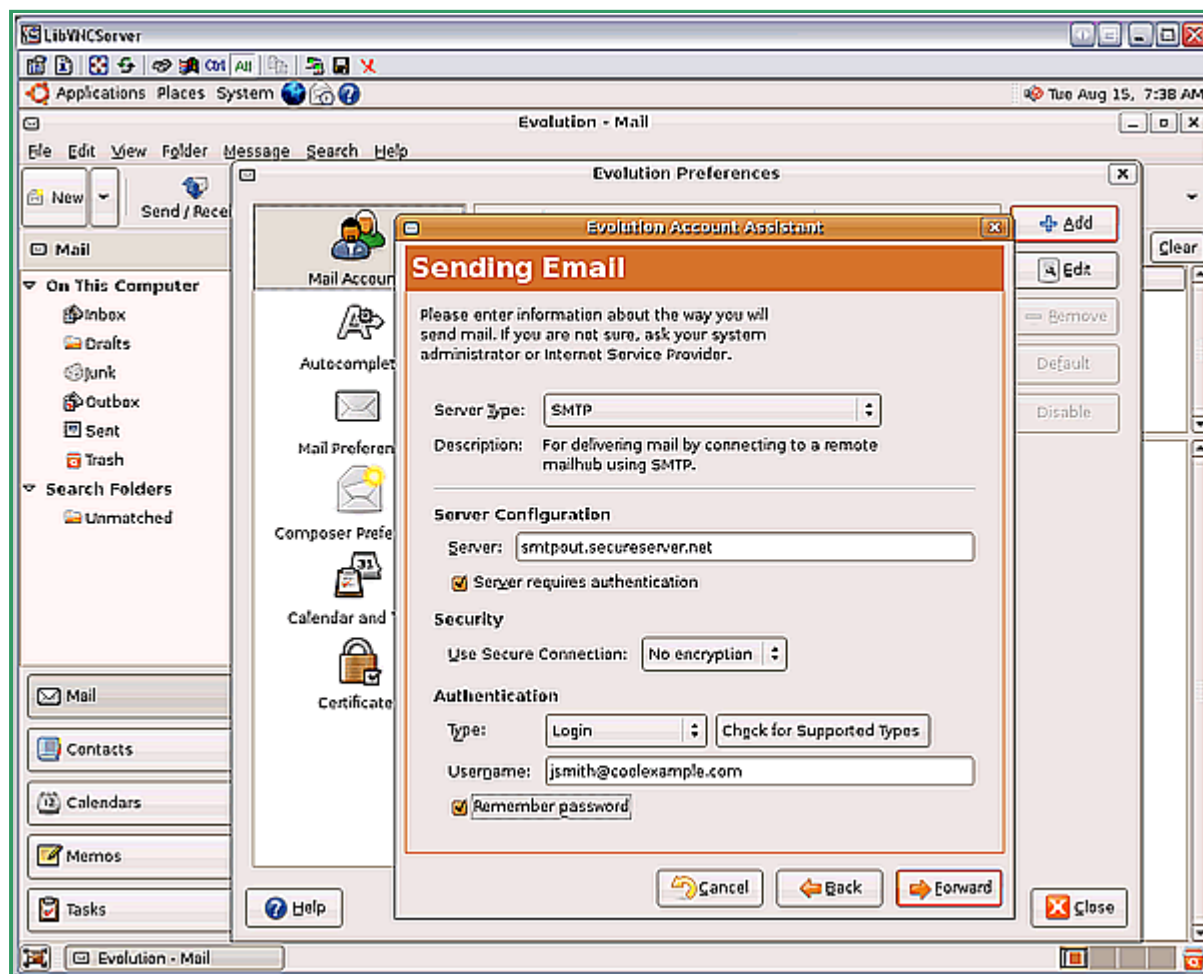
- In the Receiving Email screen, select **POP** from the **Server Type** list and complete the following fields. When you are finished click **Forward**.
  - Under **Configuration**, in the **Server** field, enter your incoming server name. For example, *mail.andwireless.net*
  - In the **User Name** field, enter your email address.
  - From the **Authentication Type** list, select **Password**.



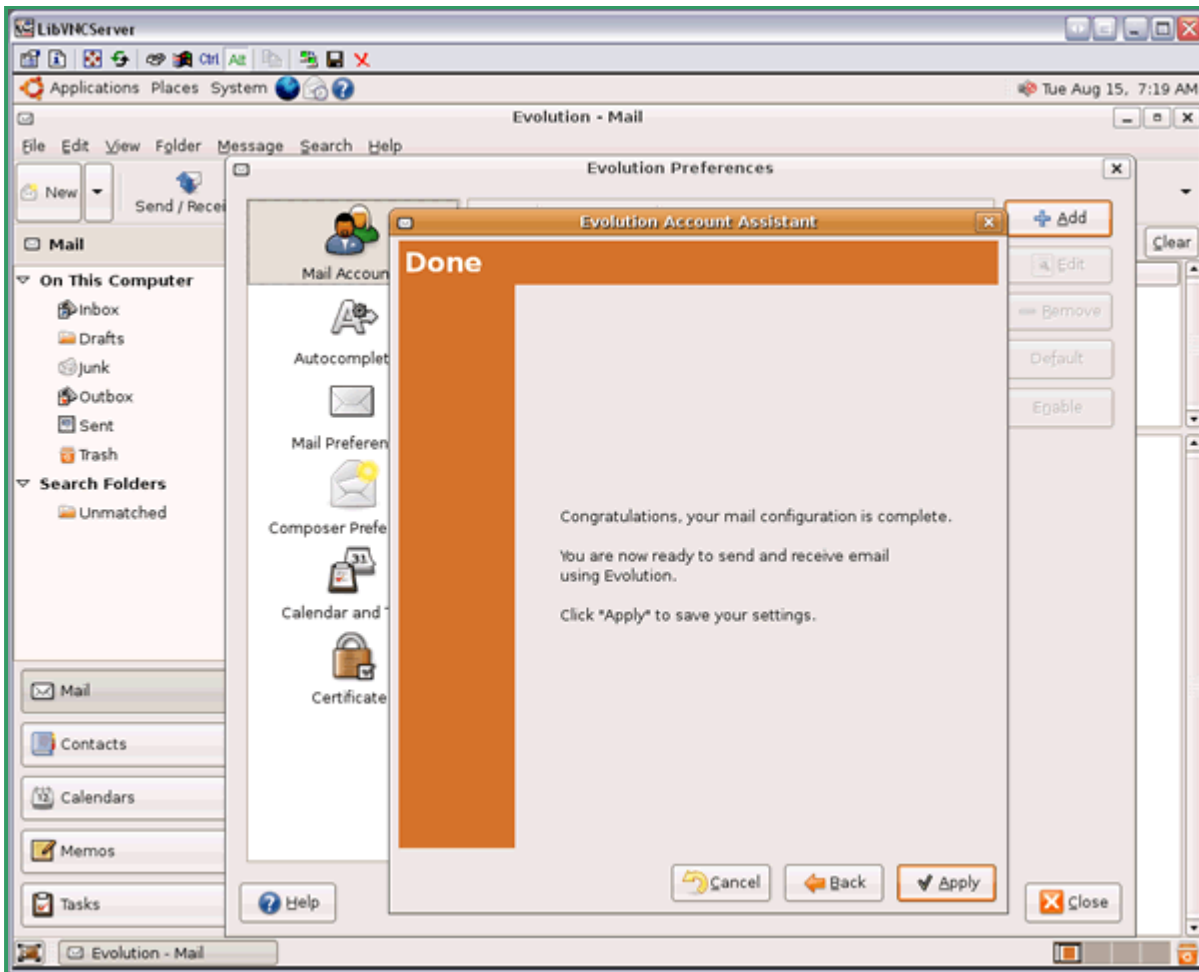
■ In the Receiving Options screen, set your preferences and click **Forward**.



- In the Sending Email screen, select **SMTP** from the **Server Type** list and complete the following fields. When you are finished, click **Forward**.
  - Under **Server Configuration**, in the **Server** field, type *smtpout.secureserver.net*.
  - Under the **Authentication** list, select **Login** and enter your SMTP user name (full email address).



- Click **Apply** to complete the configuration process.



◀ Back